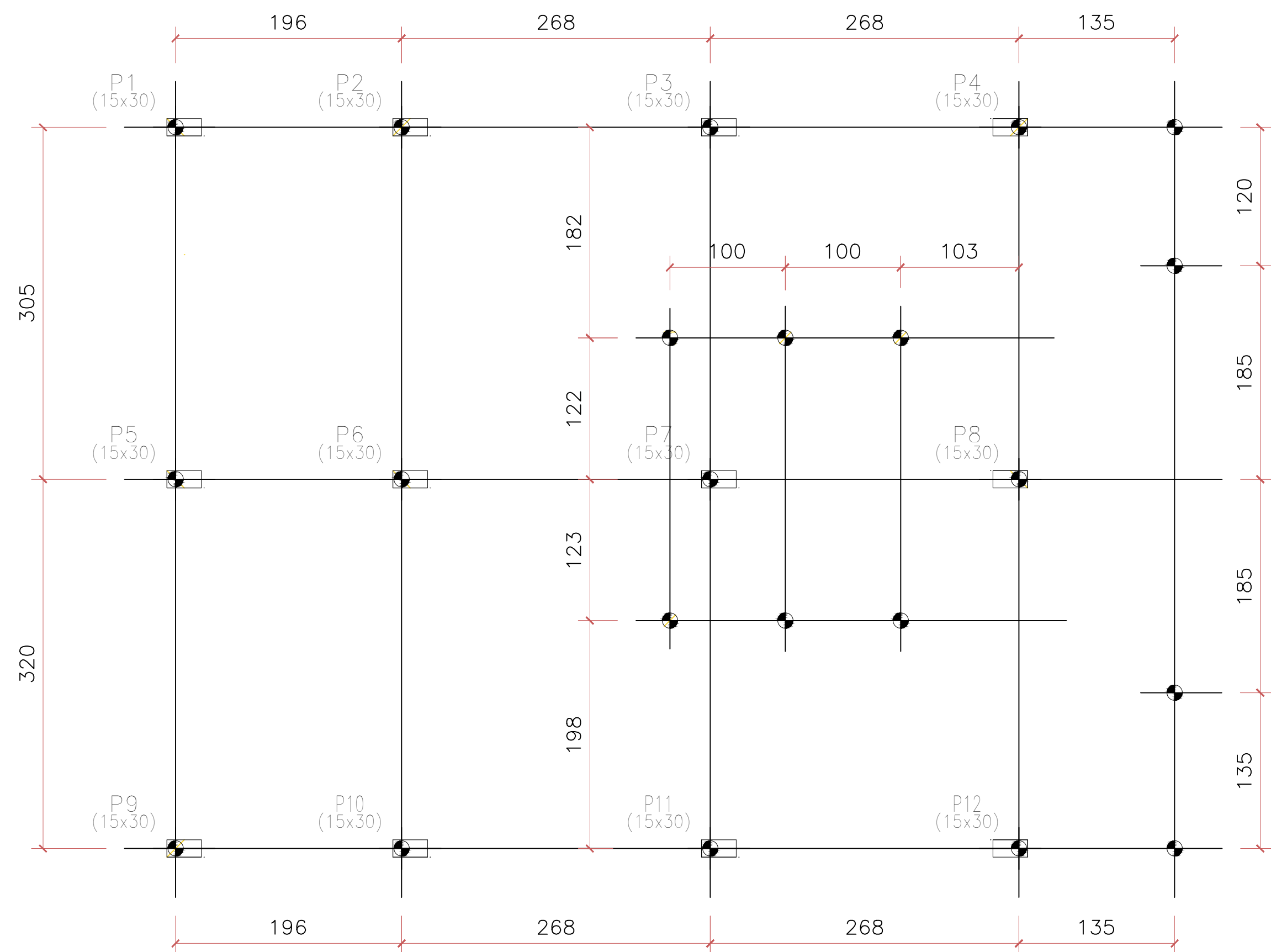
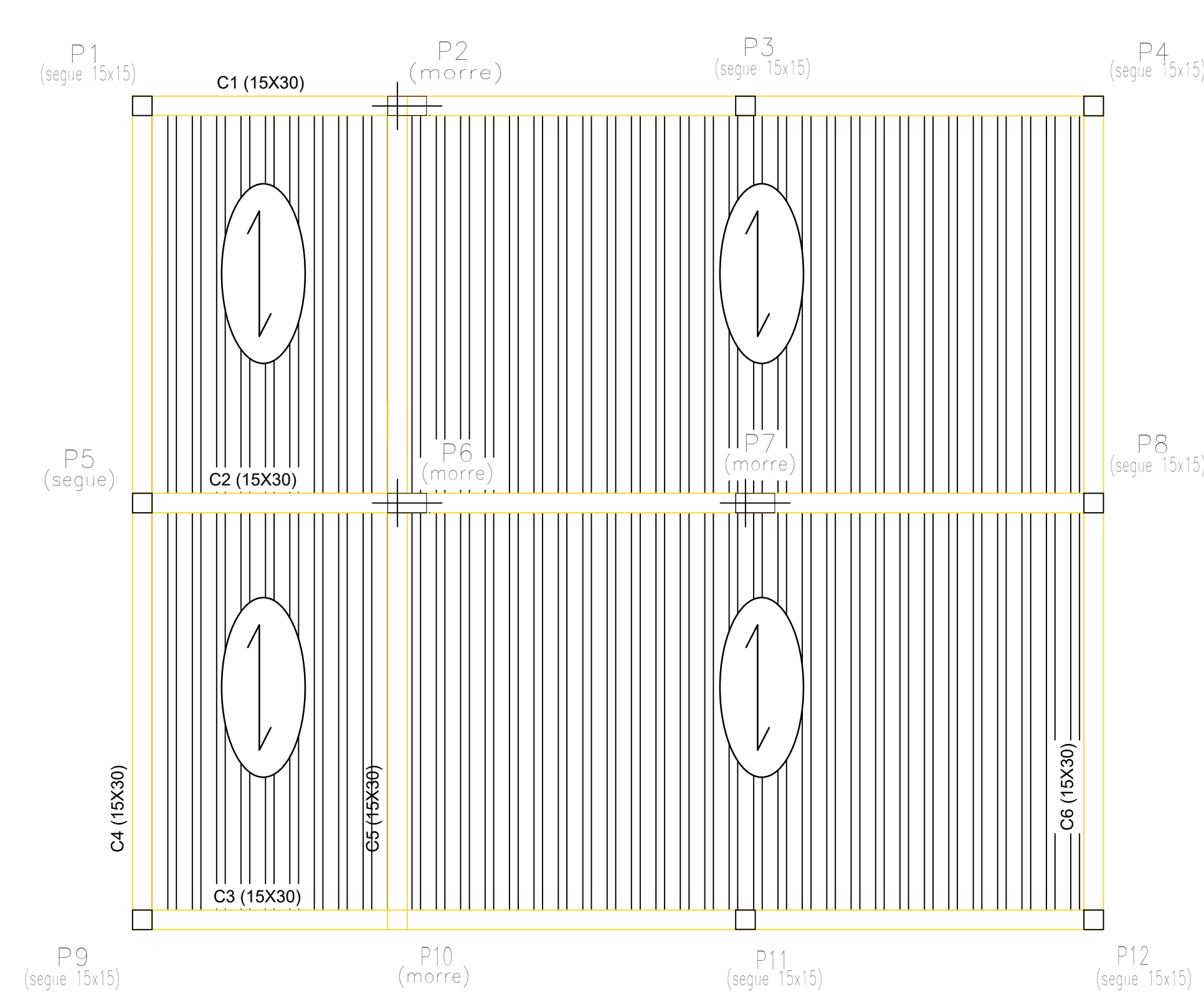


PLANTA DE LOCAÇÃO BALDRAMES nível 0,00 m  
ESCALA 1:50

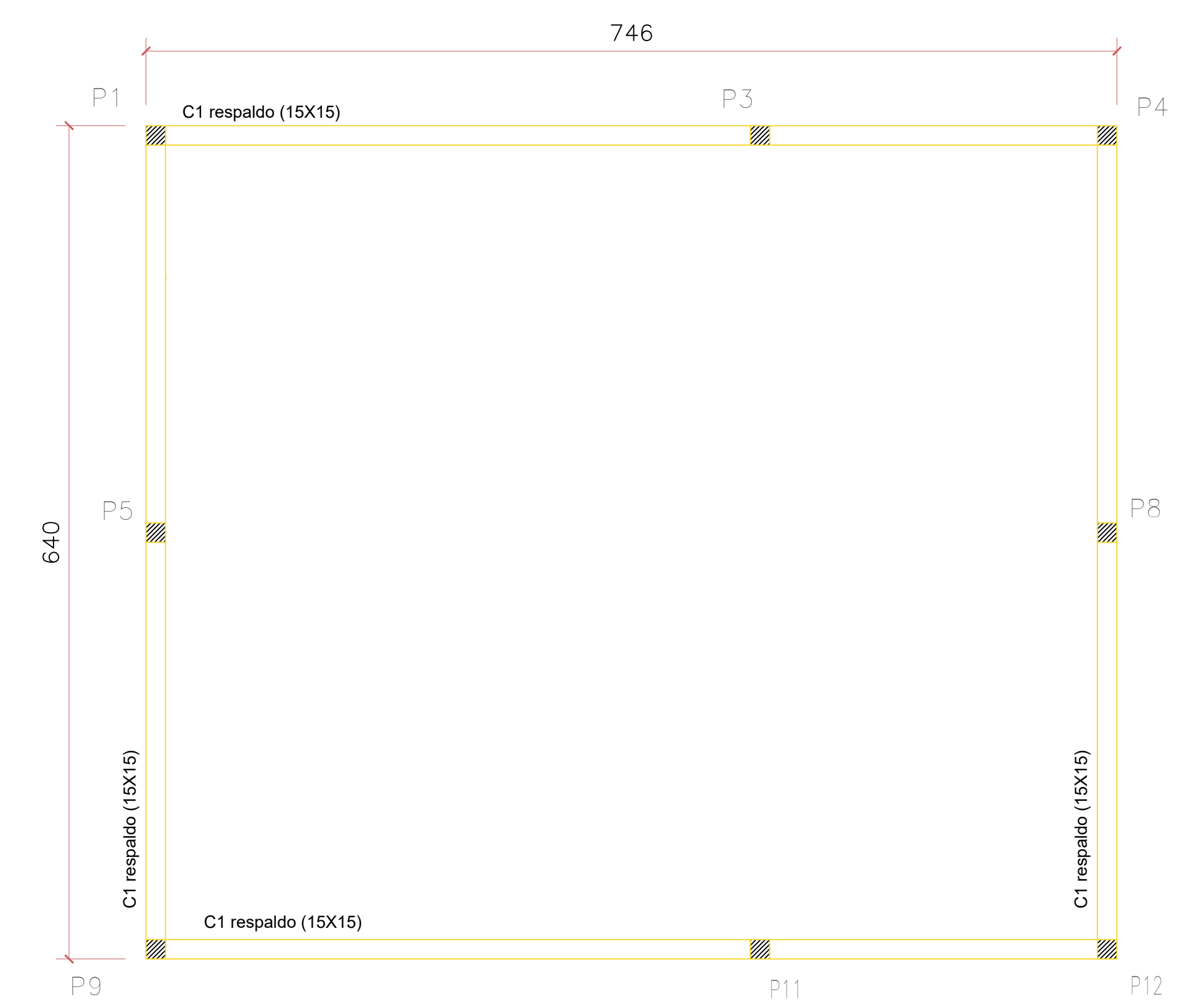


PLANTA DE LOCAÇÃO ESTACAS  
ESCALA 1:50

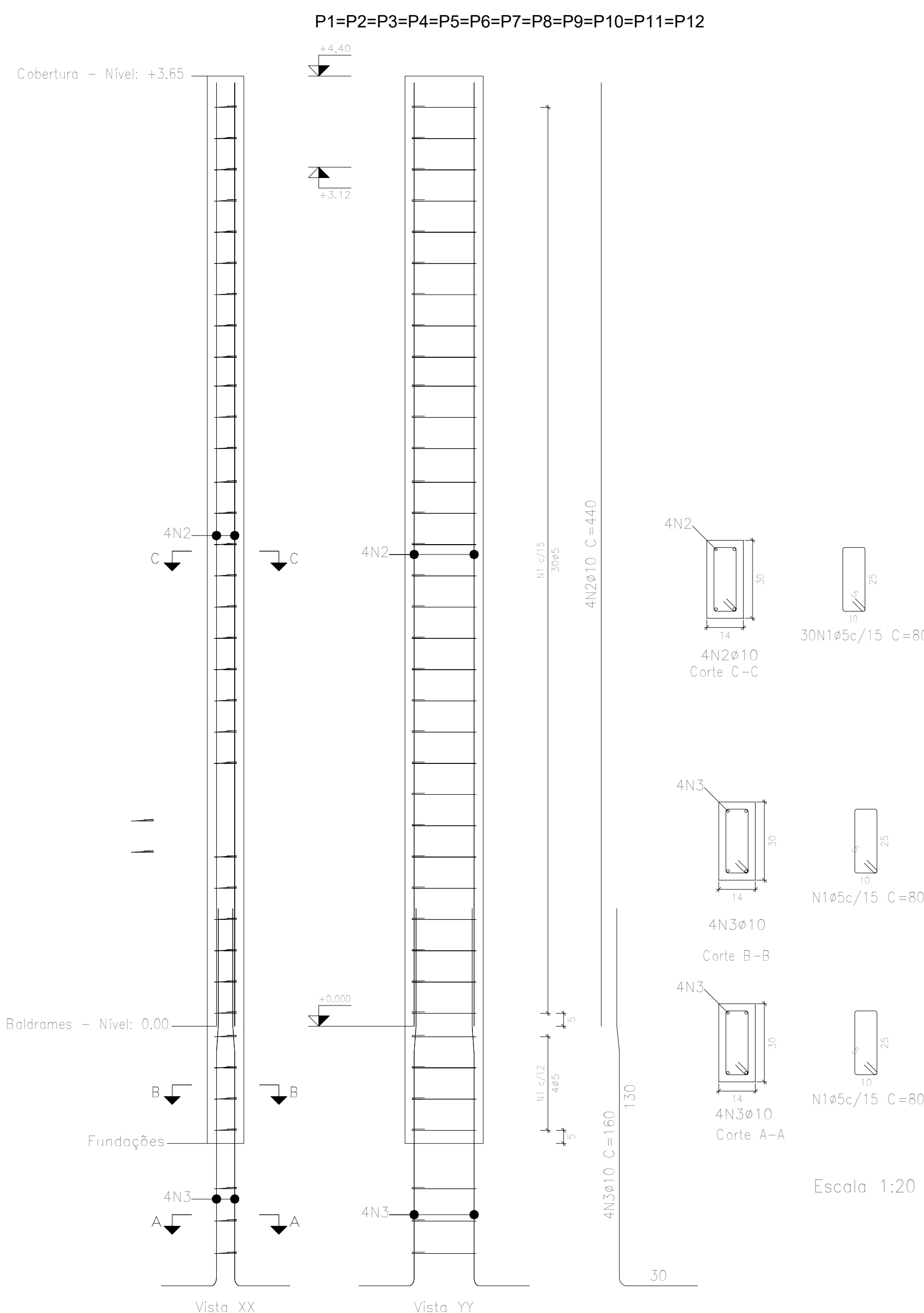
RESUMO FERRAGEM				
	Bitola (aço)	compr. (m)	Barra (t2 m)	peso (kg) Total +10%
	e 5.0	mm	783,00	71 132,78
	e 6.3	mm	193,10	18 52,04
	e 8.0	mm	280,70	24 113,27
	e 10.0	mm	371,7	34 252,27



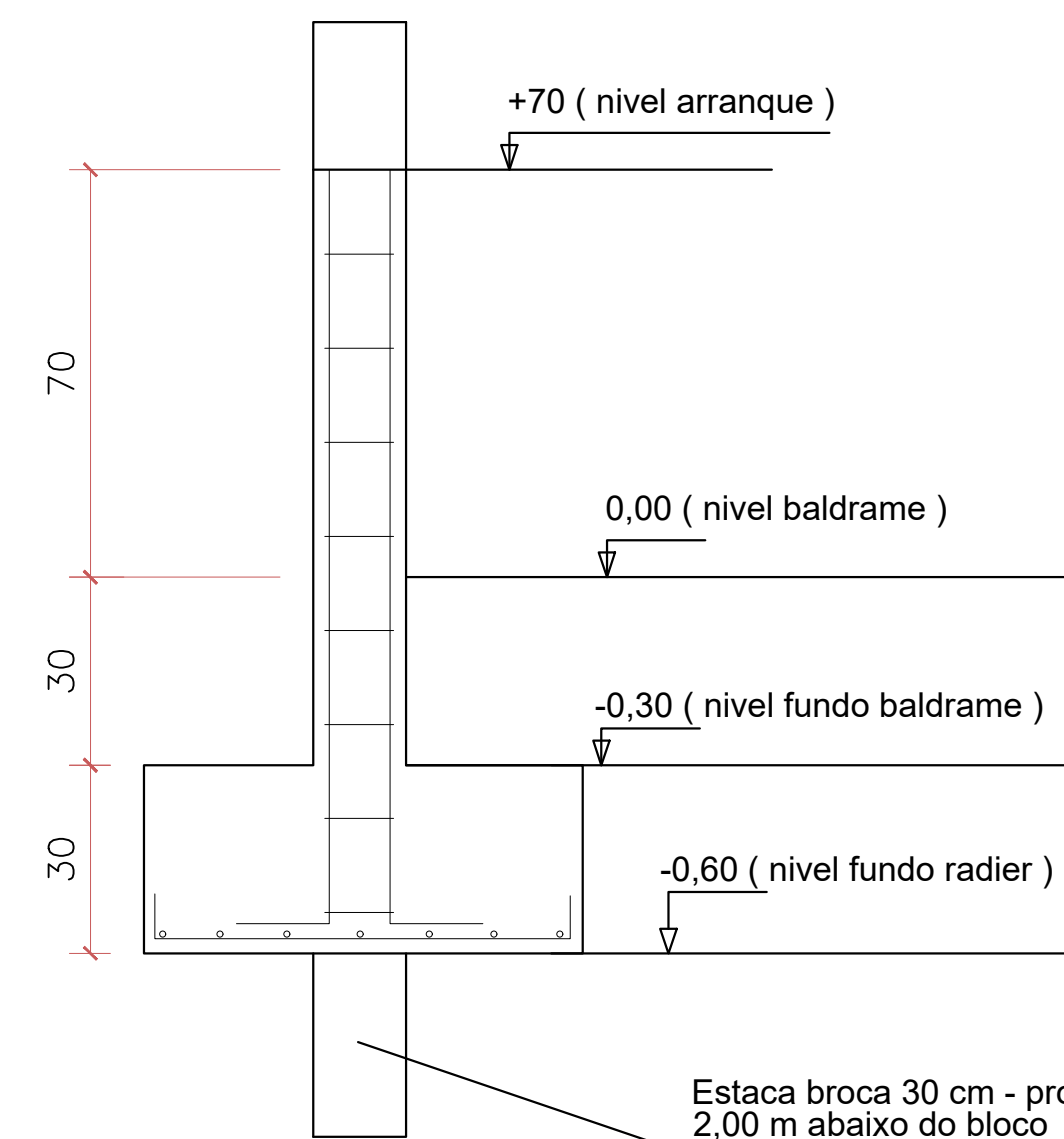
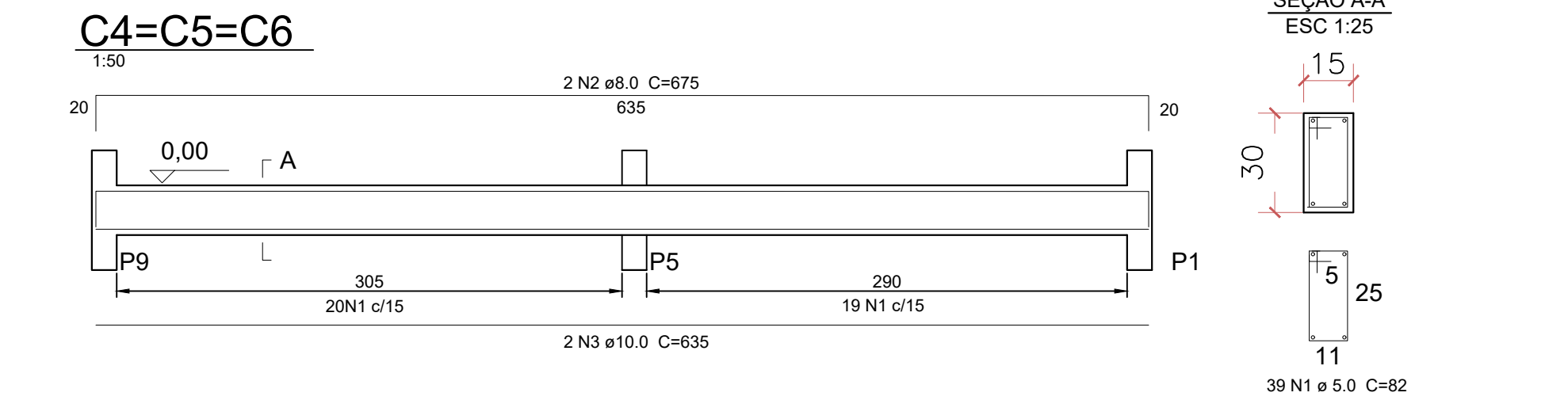
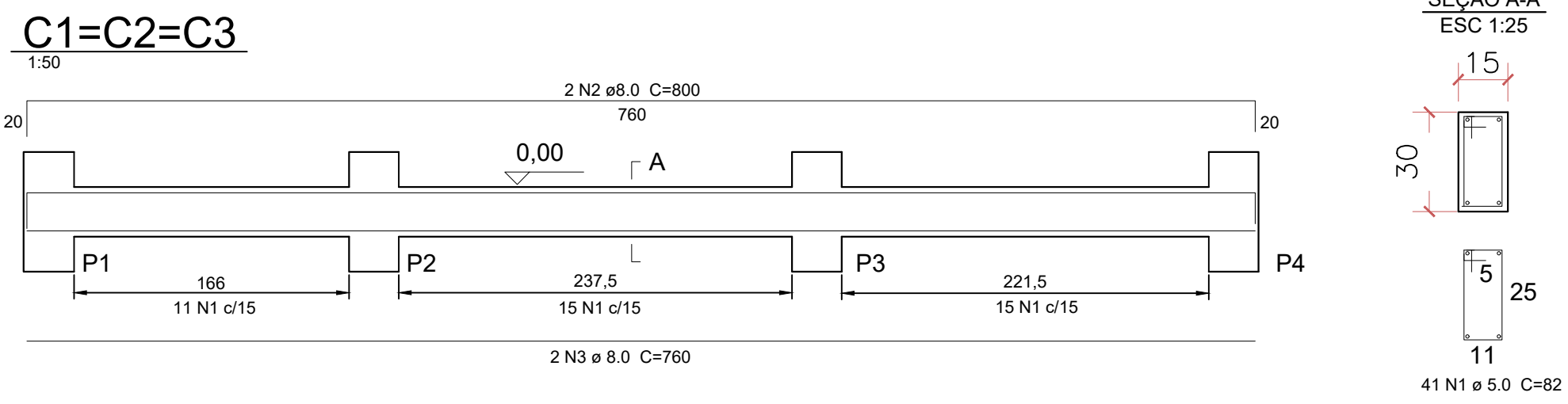
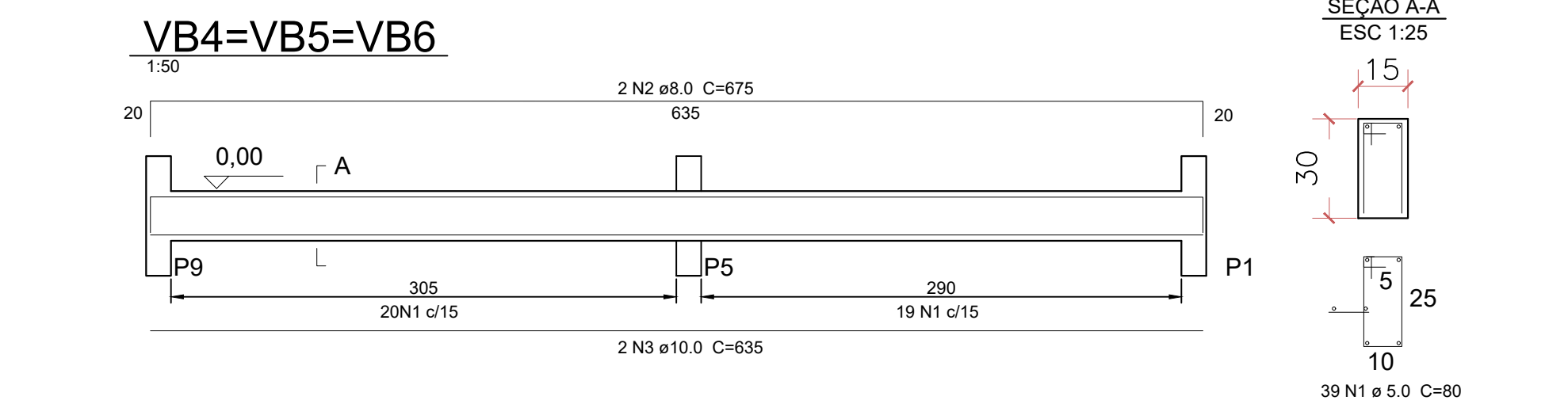
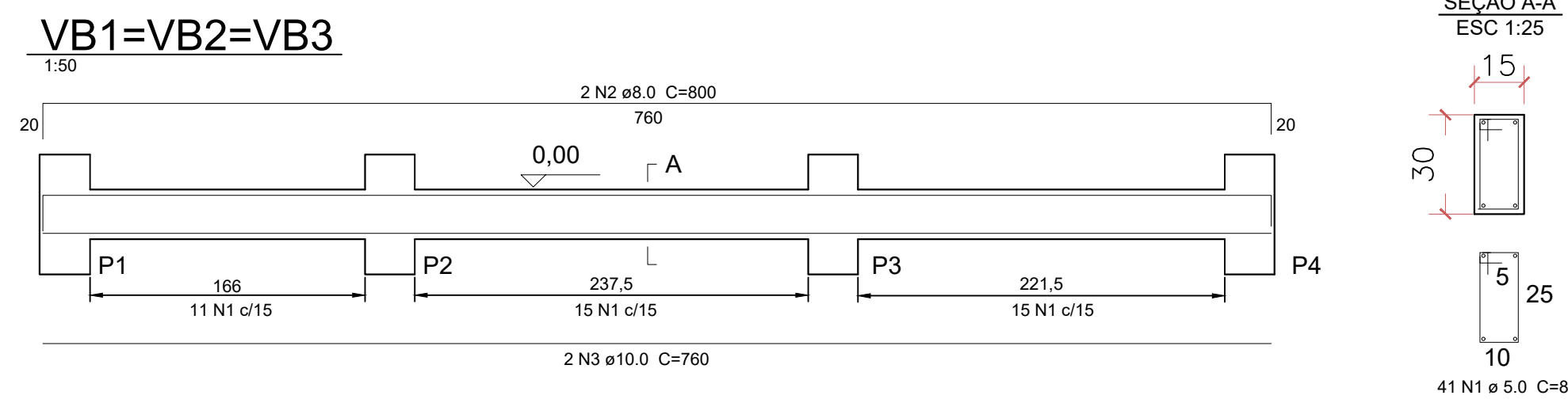
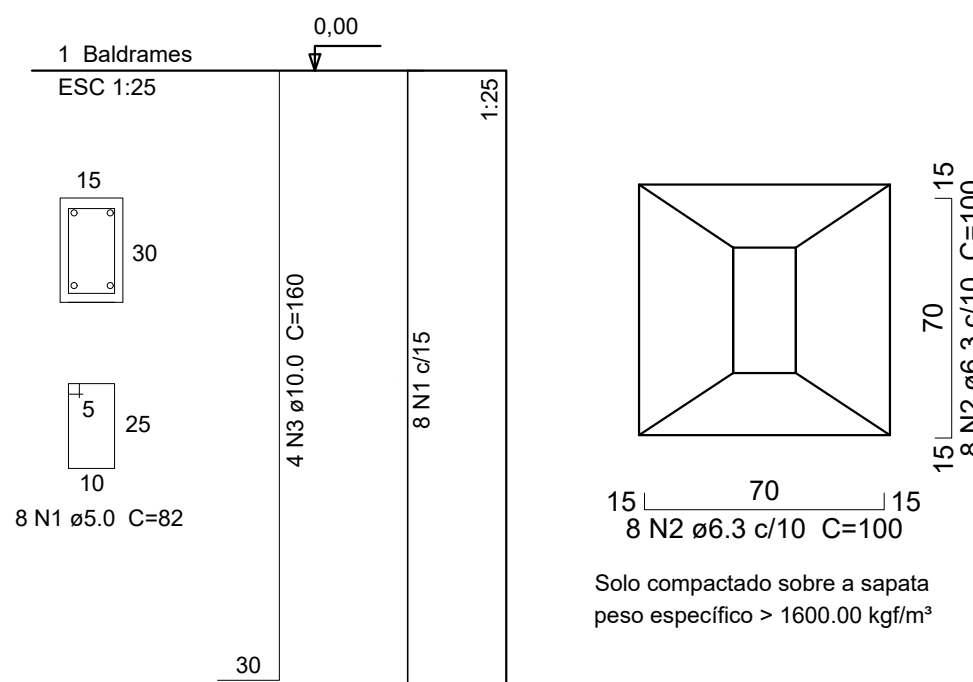
PLANTA DE FORMA DE LAJE nível 3,12 m  
ESCALA 1:50



PLANTA DE FORMA cinta respaldo nível 4,40 m  
ESCALA 1:50



P1-P2-P3-P4-P5-P6-P7-P8  
P9-P10-P11-P12



Planta  
ESC 1:50

Elemento	Pos	Diam	Q.	Esquema (cm)	Comp. (cm)	Total (cm)	CA-50 (kg)	CA-R9 (kg)
C1=C2=C3=C4 respaldo								
1	e 5	65	54	3510	5,40			
2	e 6.3	4	2772	11088	27,16			
total + 10%							29,87	5,94

Elemento	Pos	Diam	Q.	Esquema (cm)	Comp. (cm)	Total (cm)	CA-50 (kg)	CA-R9 (kg)
B1-2-3-4-5-6 7-8-9-10-11-12 arranques								
1	e 5	96	80	7680	11,82			
2	e 6.3	192	100	19200	47,04			
3	e 10.0	48	160	7680	47,38			
total + 10%							103,88	13,20

Elemento	Pos	Diam	Q.	Esquema (cm)	Comp. (cm)	Total (cm)	CA-50 (kg)	CA-R9 (kg)
P1-2-3-4-5-6 7-8-9-10-11-12 Pilares								
1	e 5	360	80	28800	44,35			
2	e 10.0	48	440	21120	130,31			
total + 10%							143,34	48,78

Elemento	Pos	Diam	Q.	Esquema (cm)	Comp. (cm)	Total (cm)	CA-50 (kg)	CA-R9 (kg)
VB1=VB2=VB3 Vigamento baldrame								
1	e 5	123	80	9840	15,15			
2	e 8.0	6	800	4800	18,96			
3	e 10.0	6	760	4560	28,13			
total + 10%							51,80	16,86

Elemento	Pos	Diam	Q.	Esquema (cm)	Comp. (cm)	Total (cm)	CA-50 (kg)	CA-R9 (kg)
VB4=VB5=VB6 Vigamento baldrame								
1	e 5	117	80	9360	14,41			
2	e 8.0	6	675	4050	15,99			
3	e 10.0	6	635	3810	23,51			
total + 10%							43,45	15,85

Elemento	Pos	Diam	Q.	Esquema (cm)	Comp. (cm)	Total (cm)	CA-50 (kg)	CA-R9 (kg)
VB1=VB2=VB3 Vigamento baldrame								
1	e 5	123	80	9840	15,15			
2	e 8.0	6	800	4800	18,96			
3	e 8.0	6	760	4560	18,01			
total + 10%							40,67	16,66

Elemento	Pos	Diam	Q.	Esquema (cm)	Comp. (cm)	Total (cm)	CA-50 (kg)	CA-R9 (kg)
VB4=VB5=VB6 Vigamento baldrame								
1	e 5	117	80	9360	14,41			
2	e 8.0	6	675	4050	15,99			
3	e 8.0	6	635	3810	15,05			
total + 10%							31,04	15,85

## PROJETO ESTRUTURAL

Estádio Municipal Joaquim Alves Belo

Prefeitura Mun. Estrela do Indaiá MG

RT - Ricardo Faustini Poltronieri - CREA 78407 D/MG

## SANITARIOS

PLanta locação, Baldrame, cintas  
Blocos e Pilares

Escala: indicadas

ÁREA  
47,74 m²

Desenho:

Revisão: 0

FOLHA

Data: 10/11/2025

Unidade: cm

01/01